



Health & Safety

Protocol For The Tourism Sector



Commercial Travel & Visitor Arrivals



Introduction

Commercial flights to Barbados will be resuming, the Ministry of Health and Wellness (MHW) is advocating for a cautious resumption of the tourism industry in a manner that is sustainable and doesn't overburden the capacity of the healthcare system.



Requirements For Entry Into Barbados

I All travelers to Barbados must complete a Pre-Arrival on-line Embarkation/Disembarkation (ED) form. It is urged that this be done at least 24hrs before arrival. This online form will include ED information, including intended address and health information, and effective from the 15th of July 2020, will allow for the uploading of COVID-19 PCR test results.

II Travellers can go to www.travelform.gov.bb to complete the form.

III Persons travelling to Barbados are strongly encouraged to take a COVID-19 PCR Test from an accredited or certified facility/laboratory. Relevant accrediting bodies and standards include: ISO:15189, CAP, UKAS or equivalent. Tests should be done within 72 hours prior to travel to Barbados. Test results should be submitted electronically and travellers should also bring a copy of test results with them. Submitted tests must be validated by the Ministry of Health and Wellness in Barbados. Test results will not be validated unless they bear the name of the traveller.

IV Persons without a negative PCR test result from an accredited or recognized laboratory will be required to take a test upon arrival.

V

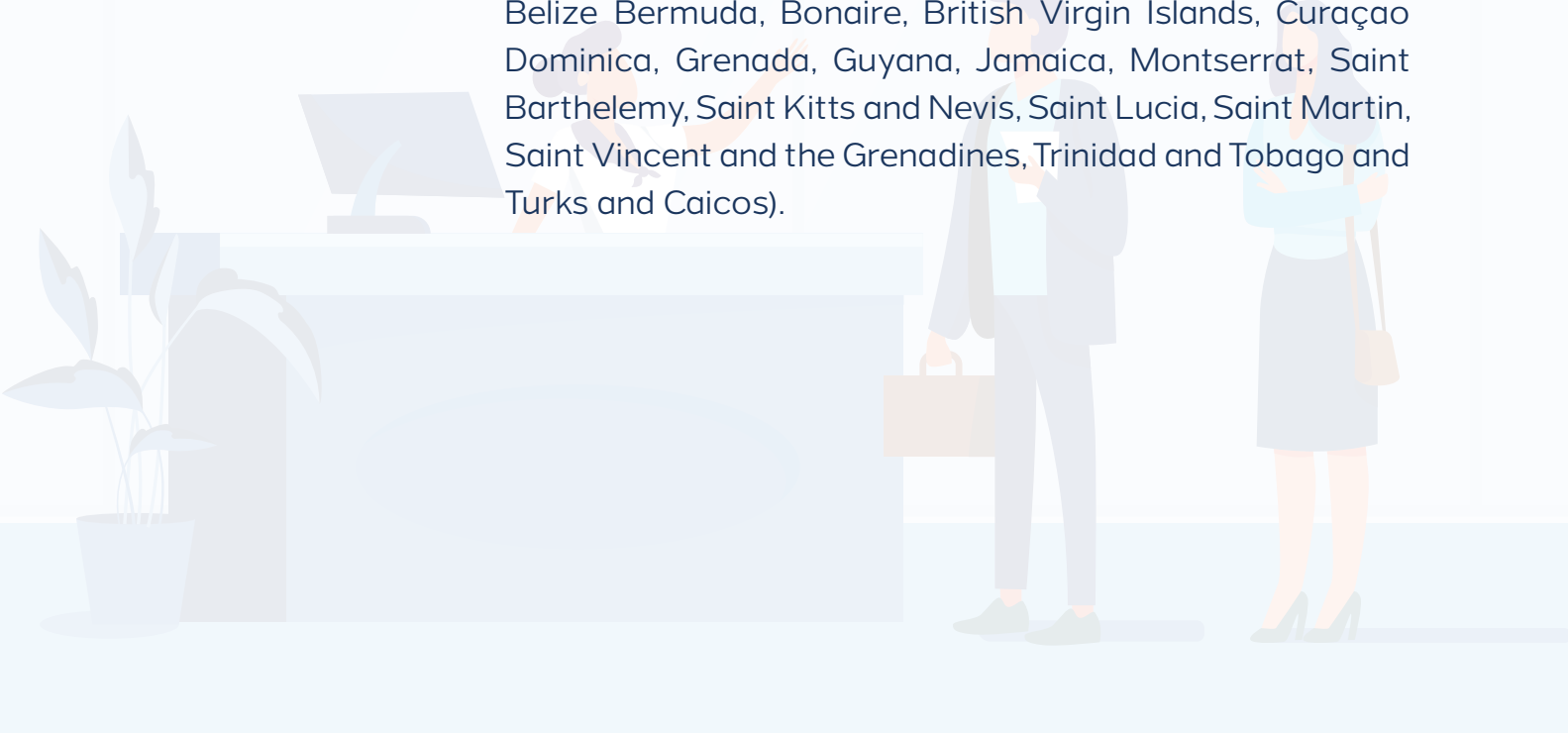
For persons requiring a COVID-19 PCR test; tests will be available at the airport free of charge or for a fee of USD \$150.00, at certain satellite/hotel sites.

VI

The Ministry of Health and Wellness reserves the right to require the testing of any person regardless of documentation presented.

VII

Persons travelling from the Low Risk countries within the “travel bubble”, who have not visited a High Risk Country within 21 day prior to arrival, will be exempted from the pretesting requirement. The “travel bubble” refers to Low risk CARICOM and Caribbean countries currently including: Antigua and Barbuda, Aruba, Anguilla, Bahamas, Belize Bermuda, Bonaire, British Virgin Islands, Curaçao Dominica, Grenada, Guyana, Jamaica, Montserrat, Saint Barthelemy, Saint Kitts and Nevis, Saint Lucia, Saint Martin, Saint Vincent and the Grenadines, Trinidad and Tobago and Turks and Caicos).

A faint, light blue illustration in the background of the page. On the left, a person is seated at a desk with a computer monitor. On the right, a man in a suit carrying a briefcase and a woman in a skirt and top are standing and talking. The illustration is semi-transparent and serves as a decorative background element.

Procedures at the Barbados Airport

I Masks must be worn while at the airport in Barbados.

II All incoming persons must undergo a health assessment which may include a temperature check and a brief interview by Port Health personnel.

III All incoming travelers (except from within the “Travel Bubble”) who have taken a COVID-19 PCR test prior to arrival will be required to present the result on arrival for verification by the Ministry of Health and Wellness in Barbados. This test must have been conducted within the period specified. Results of tests conducted outside of the time specified shall not be accepted. Any person who fails to satisfy the above requirement must undergo a COVID-19 PCR test in Barbados on arrival.

IV A visitor who does not present a valid negative test result and who declines testing on arrival will be denied entry into Barbados.

IV Citizens, Permanent Residents and persons with permanent status who do not present a valid negative test result and decline testing on arrival will be quarantined in a Government facility.

V

Persons who are tested at the airport will be offered a choice of and transported to either government accommodation, or should they choose, a designated holding hotel to await the results of their test. Should they choose a designated hotel it will be at their own expense. Persons must remain in that accommodation until they receive their results. Test results would normally be expected to be available within 24 hours.

In-transit Passengers

I

Masks must be worn while at the airport in Barbados.

II

In-transit passengers must undergo a health assessment which may include a temperature check and a brief interview by Port Health personnel.

III

In transit passengers are strongly urged to have a COVID-19 test prior to arrival.

IV

Except for persons from within the “travel bubble” in transit passengers without evidence of a valid negative test will be tested in Barbados. Should they not have a negative test they will either not be permitted to leave the airport or will be quarantined until departure or receipt of a negative test result.

During Stay in Barbados

I Visitors must abide by all public health and social measures in place in Barbados related to COVID-19 risk reduction; including physical distancing, hygiene practices, wearing of face mask and all other relevant measures.

II All persons will be required to report any symptoms to public health officials or relevant hotel/accommodation management.

III Travellers from High Risk countries may be monitored daily for the onset of symptoms and may be subjected to follow-up second COVID-19 PCR test at day 7. If this second test is negative active monitoring would be discontinued. If a second test is not done persons will be monitored for 14 days.

IV Travellers from moderate risk countries will be monitored for 7 days.

V A person may be requested to undergo an additional test for COVID-19 if circumstances arise during the period of monitoring that require it.

VI

Persons who test positive will be transferred to alternative accommodations for isolation and treatment until they have been cleared by having 2 consecutive negative tests. After clearance persons may resume their planned activities.

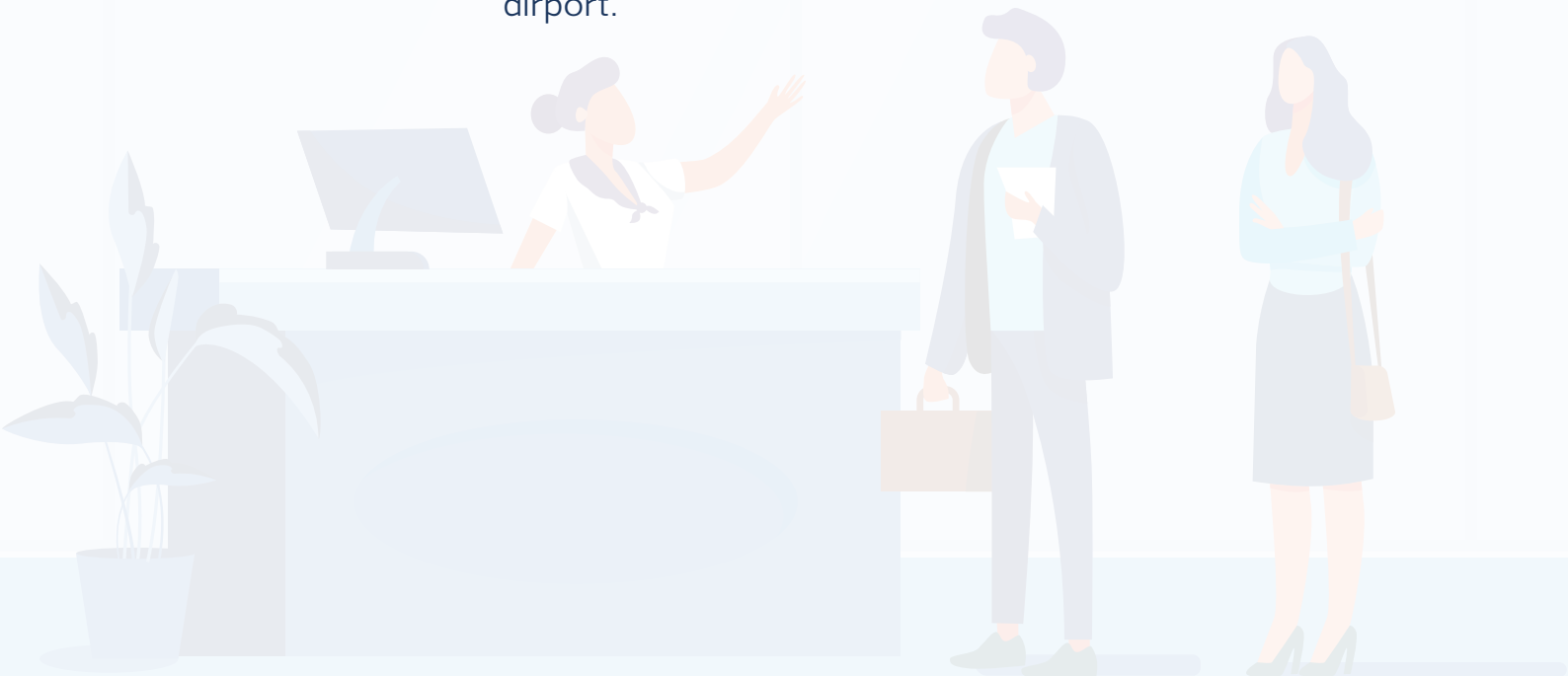
VII

Those persons who are deemed to have been in close contact with a positive case will be quarantined at facilities approved by Ministry of Health and Wellness.

Before Departure

I

All departing persons must wear a mask while in the airport.

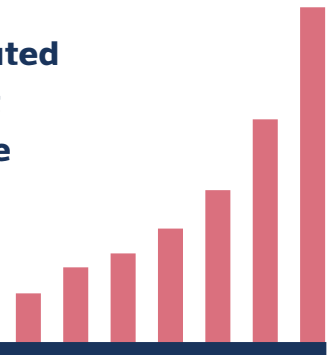


Assessing Country Risk for Importation of COVID-19

Country risk assessments are done using a transparent, reproducible methodology. The assessment takes into consideration factors including the number of cases, country population, deaths, and testing levels. We are utilizing a modified version of the WHO global surveillance monitoring system which looks at 7 day totals of new cases and is updated daily. This will be used in conjunction with WHO transmission classification system, which is as follows: -

- **No cases:** with no confirmed cases.
- **Sporadic cases:** with one or more cases, imported or locally detected.
- **Clusters of cases:** experiencing cases, clustered in time, geographic location and/or by common exposures.
- **Community transmission:** experiencing larger outbreaks of local transmission defined through an assessment of factors including, but not limited to- large numbers of cases not linkable to transmission chains; large numbers of cases from sentinel lab surveillance; and/ or multiple unrelated clusters in several areas of the country.

Travelers from each country or region will be designated in various risk categories for possible disease export which will determine the public health measures to be implemented before arrival and while in Barbados. It should be appreciated that these criteria may change as the situation evolves.



Country Risk Categorization for COVID-19

High risk:

- Countries with > 10,000 new cases in prior 7 days AND Community Transmission.
 - Many countries are in this high burden group at this time including the **USA** as well as **Brazil, Peru, Mexico, South Africa, Saudi Arabia, Iran, Russia and India.**

Medium risk:

- Countries with 101-10,000 new cases in prior 7 days AND Community Transmission.
 - Some countries in this grouping currently include **Canada, Argentina, Ecuador, Spain, UK, Portugal, Italy, S. Korea. The Dominican Republic** is also in this case range with community transmission.

Low risk:

- Countries with < 100 new cases in prior 7 days AND not in the Community Transmission Category. These countries include those in **CARICOM** as well as **New Zealand, Australia, China, Norway and Iceland.**



Each individual traveler has to be assessed for his/ her individual risk of carrying the disease since asymptomatic carriage is possible.

BARBADOS[®]
TOURISM MARKETING INC.